

PILLARS OF *Silver* I N T E R I O R S

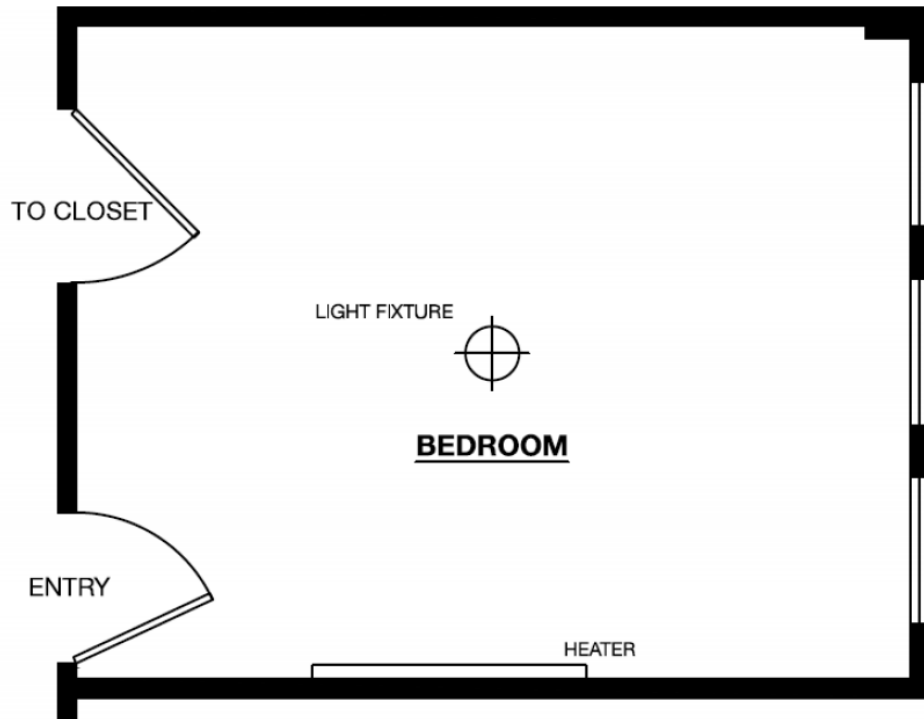
PILLARS OF SILVER ROOM MEASUREMENT INSTRUCTIONS

Recording your room's measurements can be tedious, but it's an important step in ensuring the best space plan for your room. In fact, when we determine the best layout of furnishings we have a road map on what purchases make the most sense for the room. The instructions below are for drawing a FLOOR PLAN (bird's eye view) and an ELEVATION (vertical view which shows the heights). Follow the guide below and please don't hesitate to call if you have any questions!

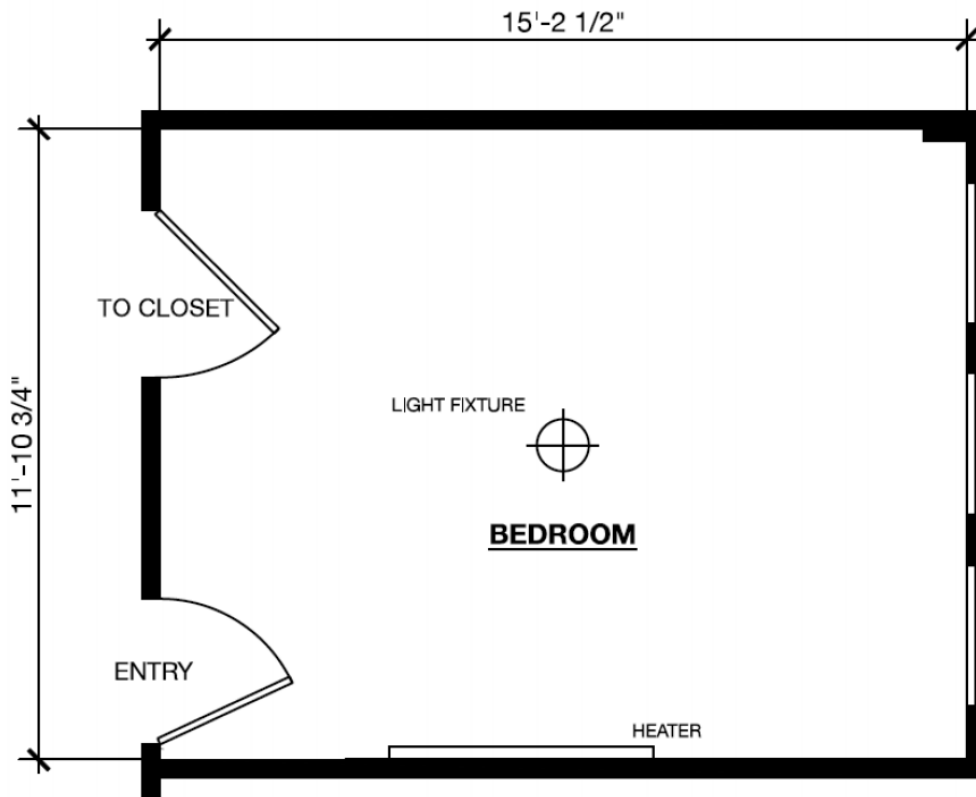
YOU WILL NEED: 1. Tape Measure 2. Paper (Graph paper is easier but absolutely not necessary) 3. Pencil
How to Draw & Measure for a Floor Plan 1. Draw the overall shape of the room on your paper (this does not have to be perfect). Leave openings (or erase) for doors / windows.



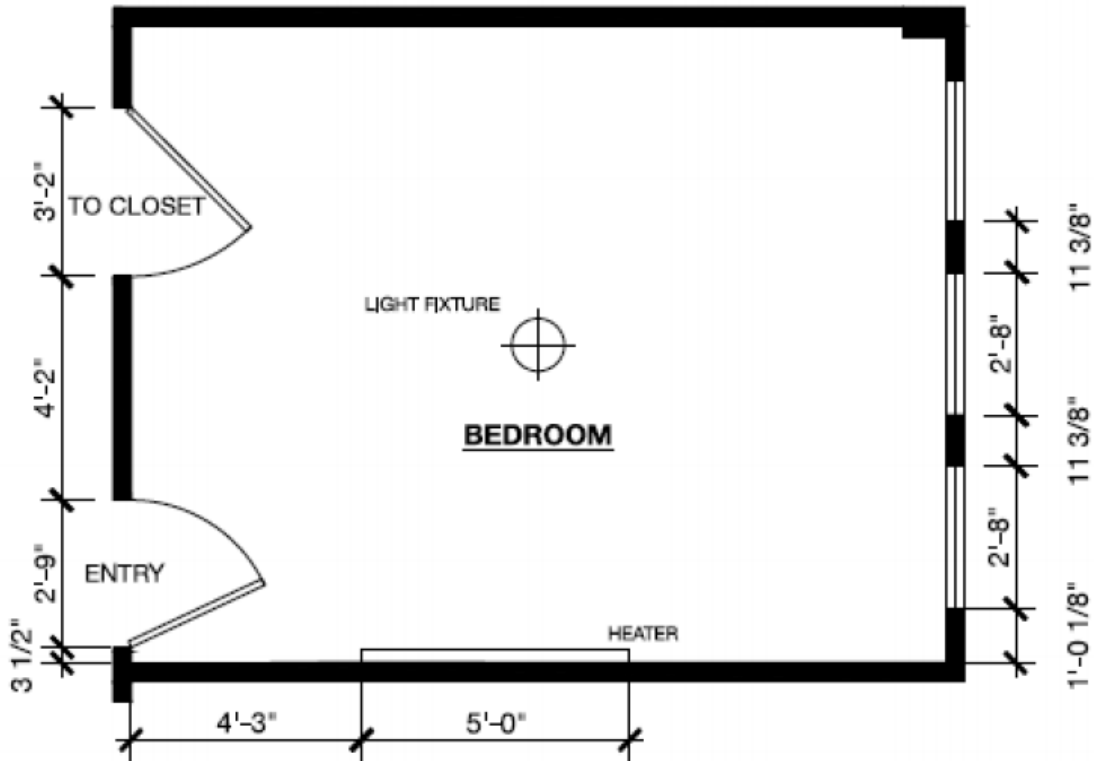
2. Draw in the doors & windows and notate any hardwire lighting, fireplaces, heaters etc.



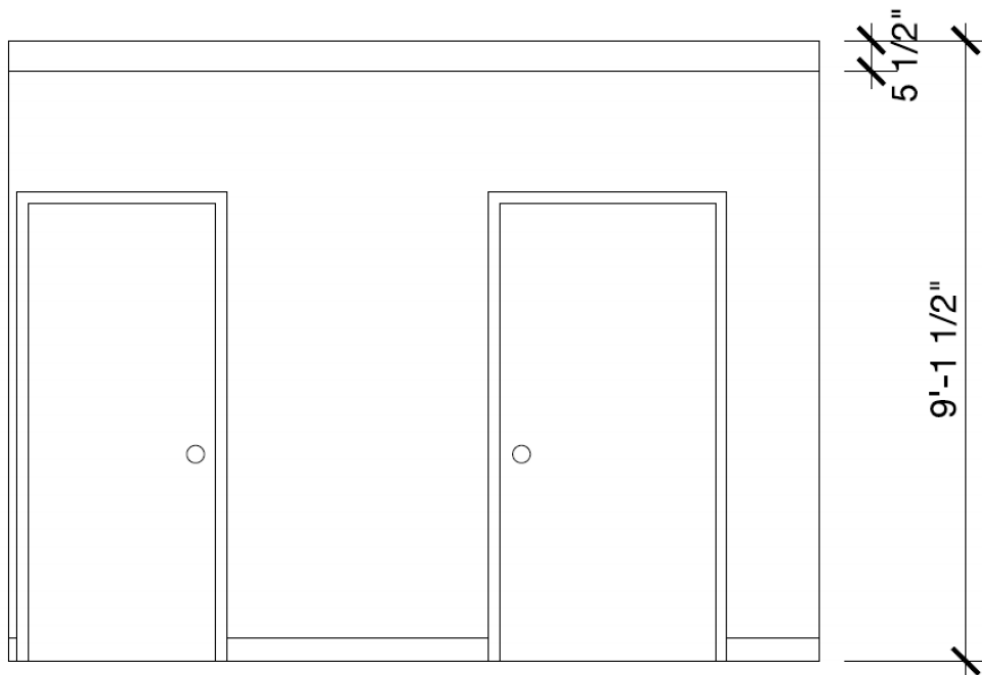
3. Draw in the overall dimensions – measure and record the overall width & length of the room. Use leaders (lines as below so it's clear from where to where the measurement is).



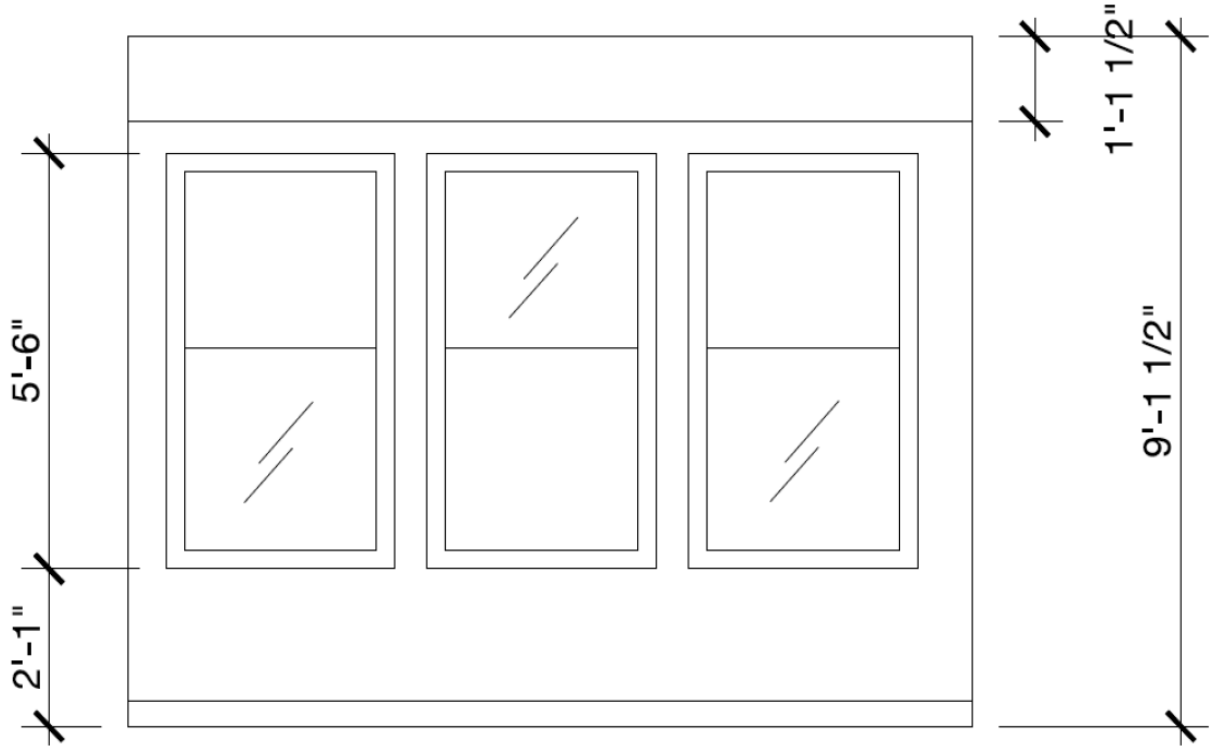
4. Draw in detailed dimensions on same plan ◦ measure starting at one wall and measure to the edge of the door (where the door opening is not the trim). Then measure the width of the door opening and record. Keep repeating this process. See how I left one dimension open? I have enough information to figure out the math on the last measurement.



How to Draw & Measure for an Elevation If you stand and face the wall that is called an elevation. It records important information like how high the ceilings and windows are, any built in bookshelves, custom crown molding etc. 1. Draw each wall and draw in any doors, windows, trim, crown molding



2. Add dimensions for the height to the elevations. For windows, measure from the floor up to the bottom of the sill and then measure the overall height of the window



3. Please number your elevations and mark which wall they point to on the floor plan.

Please submit your measurements in an email (by scanning or snapping a picture and attaching) along with some clear photos of the room along and your questionnaire answers (have fun with it!).